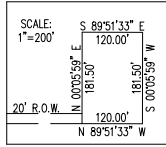


SECTIONS 22 TO 27 & 34 TO 36
T.8N., R.3E., S.L.B.&M.

IN WEBER COUNTY
SCALE 1" = 1200'

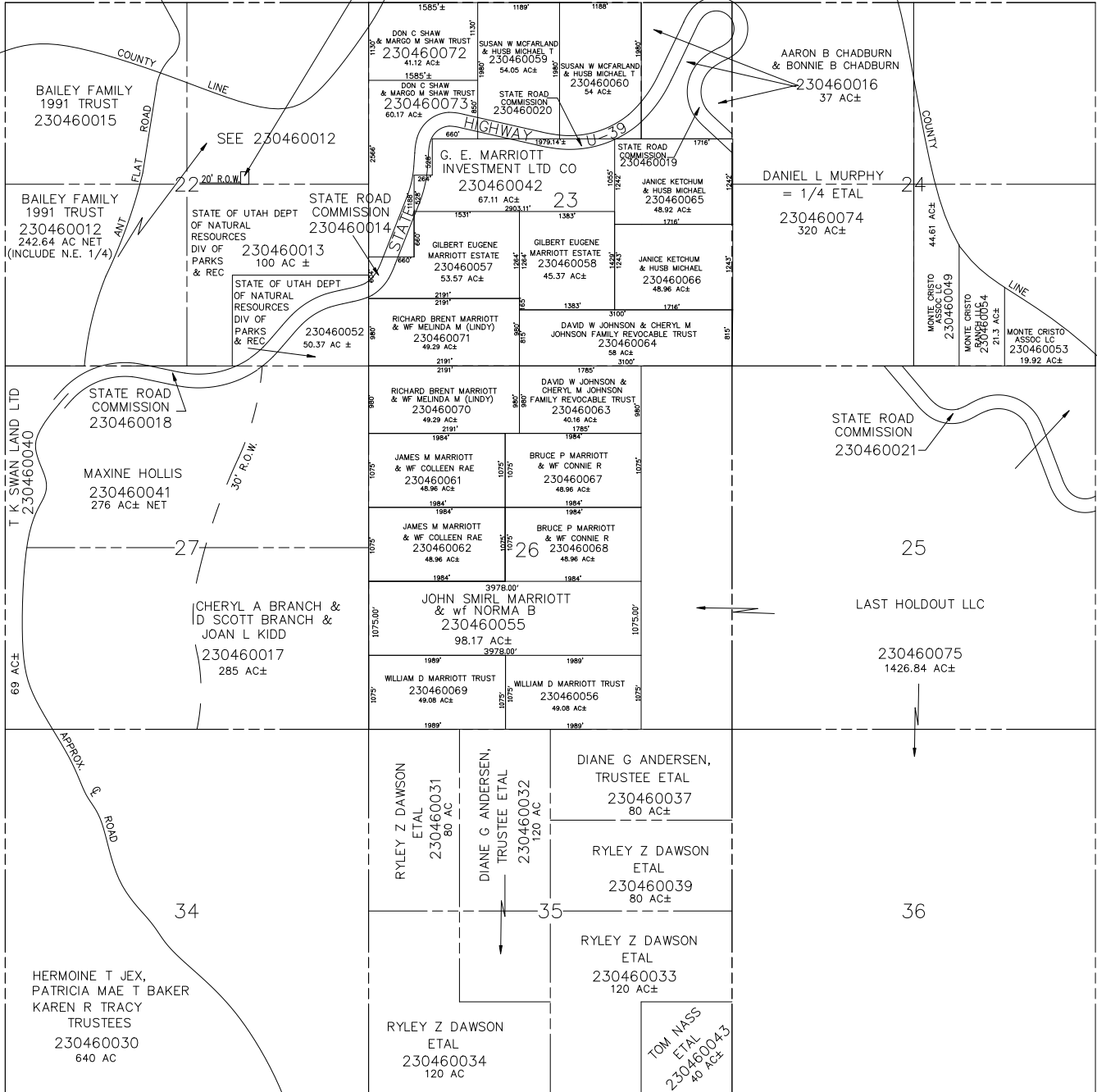
TAXING UNIT: 58



BAILEY FAMILY
1991 TRUST
230460047
21,780 SQ. FT.

SEE PAGE 46

NOTE: WEBER/CACHE ASSESSMENT LINE
CHANGED TO COUNTY LINE - 1995



SEE PAGE 13

SEE PAGE 46

SEE PAGE 46-2